

Use the link from the Google Classroom, or

Hey, students!

Go to student.desmos.com
and type in:

6DWZC

...before we begin

You can also share this link with your students:

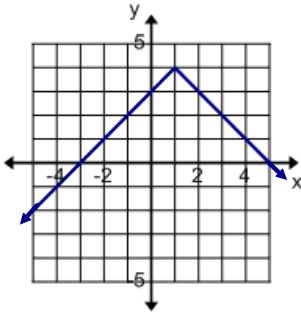
<https://student.desmos.com/?prepopulateCo>

MCF 3MI

Domain & Range

Date: Feb. 15/18
(Every lesson)

Ex.1: Describe the following graph's location on the axes in words.



Domain: $\{x \in \mathbb{R}\}$
Range: $\{y \in \mathbb{R} \mid y \leq 4\}$

We can describe relations mathematically using Domain & Range.

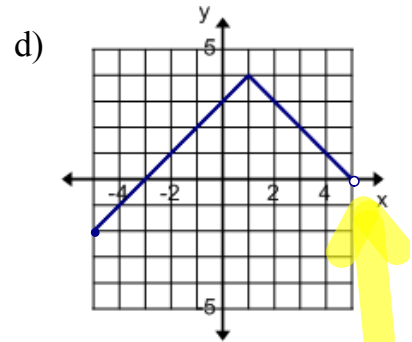
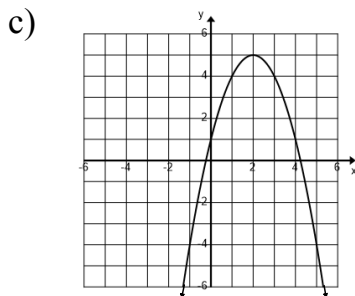
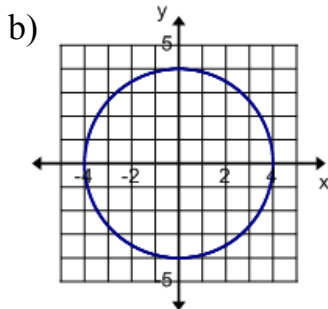
Domain: The set of x -values that form a relation.

Range: The set of y -values that form a relation.

Ex.2: State the Domain & Range for the following relations.

a) $\{(3, 2), (4, 2), (1, -1), (-1, 1), (3, 5)\}$

Domain: $\{3, 4, 1, -1, 3\}$ or $\{3, 4, 1, -1\}$ or $\{-1, 1, 3, 4\}$
Range: $\{2, 2, -1, 1, 5\}$ or $\{-1, 1, 2, 5\}$



D: $\{x \in \mathbb{R} \mid -4 \leq x \leq 4\}$

D: $\{x \in \mathbb{R}\}$

D: $\{x \in \mathbb{R} \mid -5 \leq x < 5\}$

R: $\{y \in \mathbb{R} \mid -4 \leq y \leq 4\}$

R: $\{y \in \mathbb{R} \mid y \leq 5\}$

R: $\{y \in \mathbb{R} \mid -2 \leq y \leq 4\}$

y is between -4 and 4 (including -4 and 4)

The Range is the set of all Real numbers such that y is Less than or equal to 5.

means there are NO RESTRICTIONS on x .

Today's Homework Practice: Worksheet #1-9

Less >